



January 14, 2021

Broadwater County Commissioners
Broadwater County Courthouse
515 Broadway St.
Townsend, MT 59644

Dear Commissioners:

Rocky Mountain Supply, Inc (RMS) is a locally owned cooperative based in several agricultural communities throughout western Montana. As the demand for our services and products have increased at our Townsend location, so has the necessity to upgrade and expand our facilities. In effort to meet our customer needs, RMS is proposing to construct a new retail facility in Broadwater County at the intersection of Mostad Drive and Highway 287 (just south of Watson Irrigation). When the proposed Rocky Mountain Supply gas station and retail facility is completed, the commercial section of Highway 287 through Townsend will effectively be increased by 900 feet.


The current speed reduction into Townsend from 70 MPH to 45 MPH begins 800 feet north of Mostad Drive (Watson Irrigation). With the potential level of traffic that could be produced by this project, it would be desirable to extend the existing the 45 MPH speed zone to the south by approximately 1,500 feet to cover the increased length of commercial land uses along Highway 287. As we are concerned for the safety of our customers, county citizens and Montanans alike, RMS is requesting the Broadwater County Commissioners consider our request to relocate the 45 MPH speed zone 1,500 feet south of its current location.

Per MDT requirements, governing bodies must request the implementation/modification of speed zones along MDT facilities located within their local jurisdictions. As such, RMS would request the Broadwater County Commissioners submit a letter to MDT requesting the 45 MPH speed zone be extended as described above.

We hope the Board will consider our request in effort to ensure the safety of our community and all Montanans.

Sincerely,

Rocky Mountain Supply, Inc

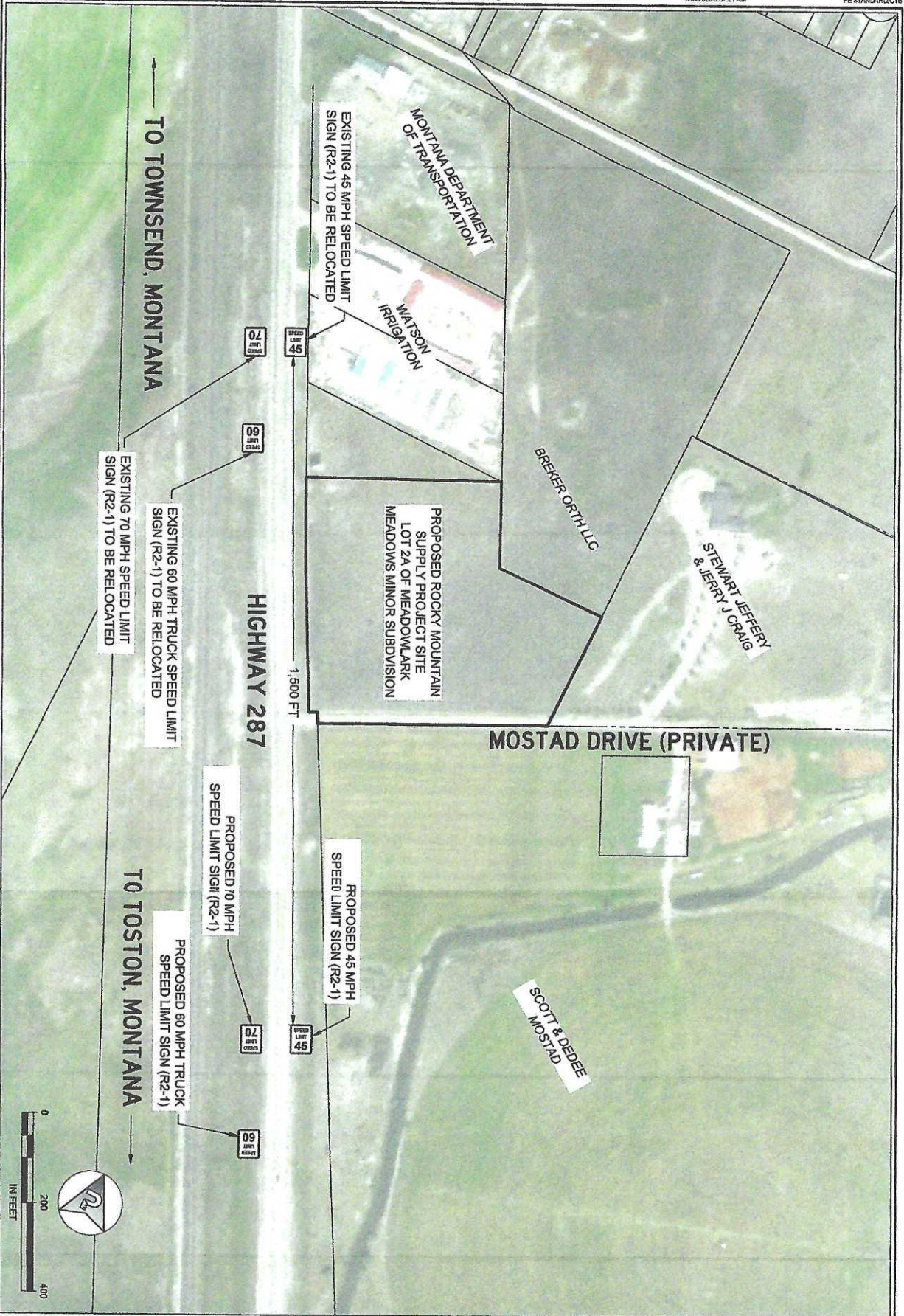

Brad A. Gjermo,
CEO

Attachments: MDT Speed Zone Exhibit

Corporate Office

210 Gallatin Farmers Ave. • Belgrade, MT 59714 • (406) 388-4009

www.rmsi.coop



<p>DRAWING NUMBER EX 1</p> <p><small>COPYRIGHT 2020 ©</small></p>	<p>SHEET NUMBER 1 OF 1</p>	<p>PROJECT NUMBER 2020-068</p>	<p>SHEET TITLE MDT SPEED ZONE EXHIBIT</p>	<p>RMS - TOWNSEND</p> <p>TOWNSEND, MT</p>	
---	---------------------------------------	---	---	--	--